

Center for

RURAL



Pennsylvania

A LEGISLATIVE AGENCY OF THE PENNSYLVANIA GENERAL ASSEMBLY

Virtual Summit on Broadband in Adams County

Kyle C. Kopko, Ph.D.
Director, Center for Rural Pennsylvania
kkopko@rural.palegislature.us | www.rural.palegislature.us



Center for Rural Pennsylvania

**Legislative research agency of the Pennsylvania
General Assembly
(Act 16, 1987 & Act 12, 2009)**

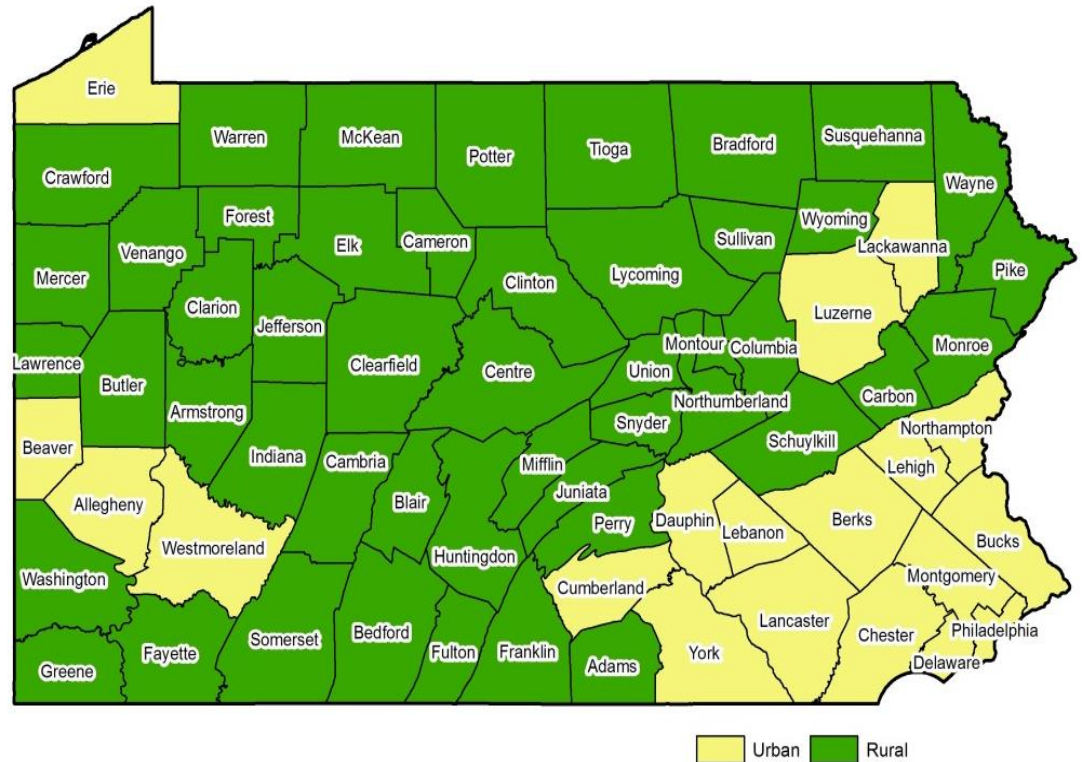
Mandates

- **Administer grants to conduct research on rural conditions.**
- **Maintain a database on rural conditions and needs.**

**Recent Legislative Hearings:
Opioid Use, Broadband Access, COVID-19 Vaccines,
Rural Aviation**

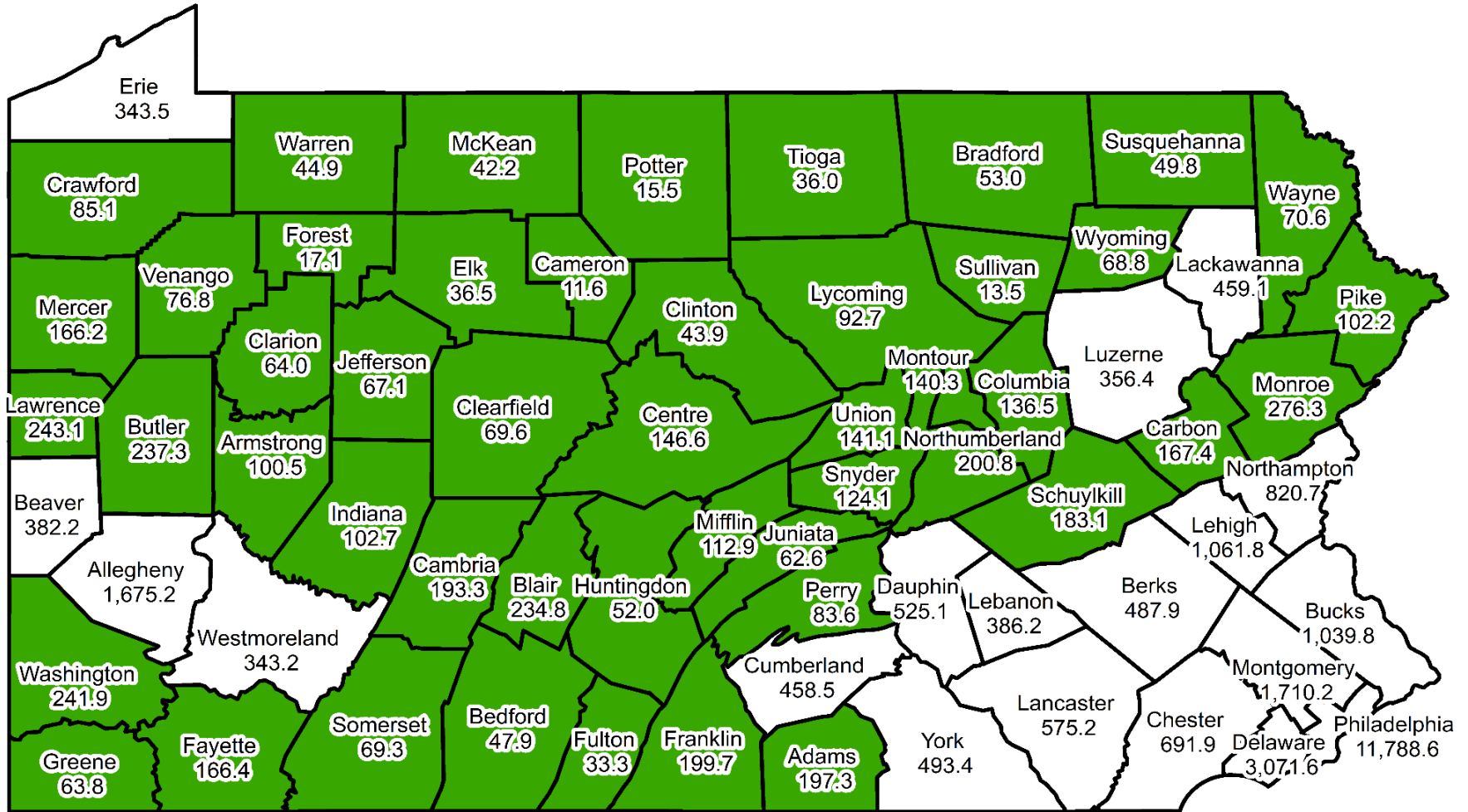
This is Rural Pennsylvania

- Rural Pennsylvanians (nearly 3.4 million) represent almost 27% of the state's population.
- Rural Pennsylvania comprises 75% of the state's land area.
- According to the U.S. Census Bureau, Pennsylvania has the third largest rural population in the nation: Texas is first, followed by North Carolina.
- 48 of Pennsylvania's 67 counties are classified as rural.
- Only Delaware and Philadelphia Counties have no rural population.



The Center's definition of rural is based on population density. A county is rural when the number of persons per square mile within the county is less than 284 (the statewide average). The Center's rural definition also addresses rural schools districts and municipalities.

Center for Rural Pennsylvania's Rural and Urban Counties, 2010



- Urban Counties (n=19)
- Rural Counties (n=48)

According to the Center for Rural Pennsylvania's definition, a rural county has a population density below the statewide average of 284 persons per square mile. Urban counties have a density at or above the statewide average

Data source: 2010 Census, U.S. Census Bureau



Two Studies on Rural Broadband

- Professor Sascha Meinrath and colleagues from Penn State University

Broadband Research: 2018

Mapping Broadband Internet Connectivity Across Pennsylvania

From December 2017 FCC Form 477 Data

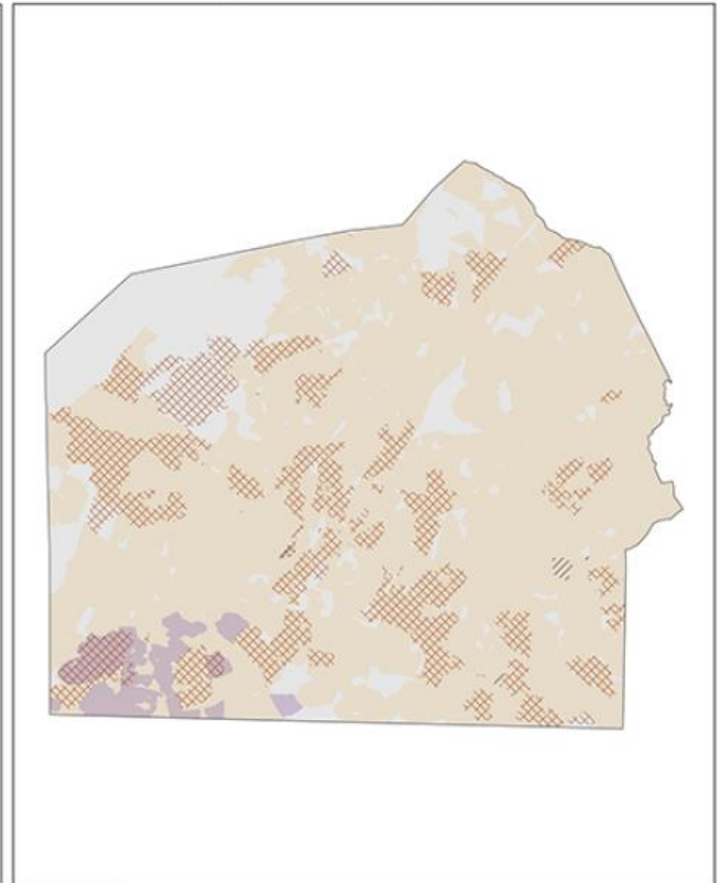
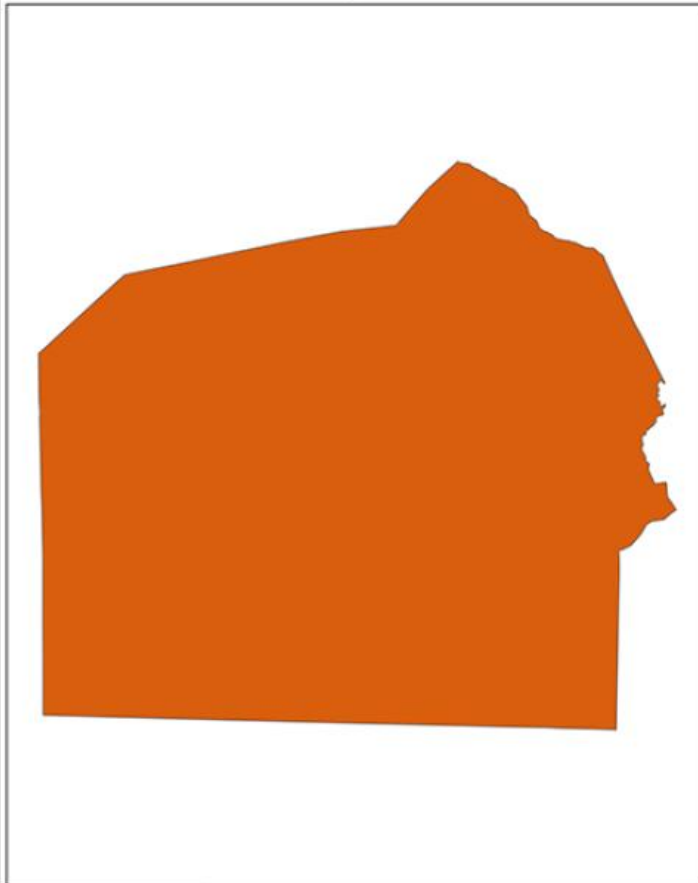
Internet Service Availability, Dec 2017

Broadband by Type of Technology, Dec 2017

Average
Download
Speed
(2017):

5.4 Mbps

M-Lab tests



■ ≥ 10 Mbps / 1 Mbps
■ ≥ 25 Mbps / 3 Mbps

Source: FCC Form 477, Dec 2017 V2
H. Bonestroo and H. Trostle
Institute for Local Self-Reliance 05/13/19

/// Fiber
■ Satellite
■ Cable
■ DSL/Other Copper
■ Fixed Wireless

Source: FCC Form 477, Dec 2017 V2
H. Bonestroo and H. Trostle
Institute for Local Self-Reliance 05/13/19

Comparing Counties: 2020

Adams County

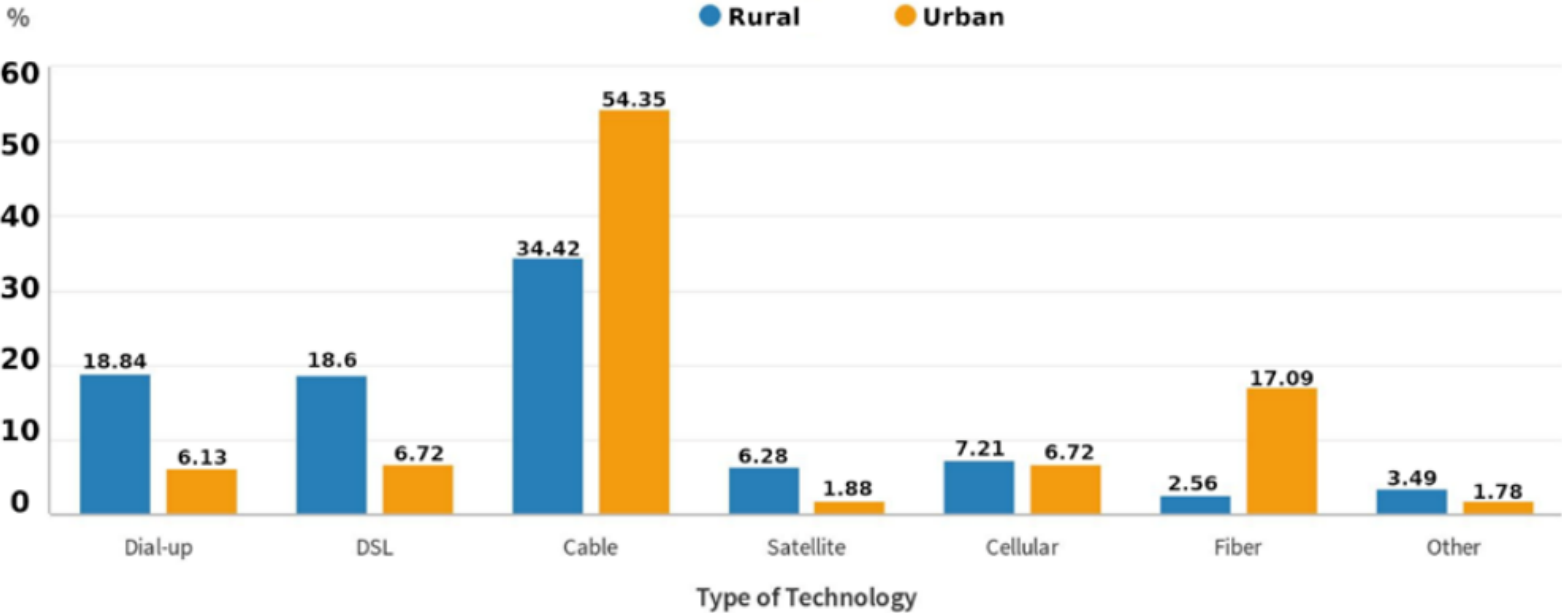
- Download: 39.3 Mbps
- Upload: 5.7 Mbps
- Rank #20 out of 67 counties for internet download speeds

Others

- Chester County #1
 - Download: 81.2 Mbps
 - Upload: 20.5 Mbps
- Erie County #33
 - Download: 30.4 Mbps
 - Upload: 9.5 Mbps
- Snyder County #67
 - Download: 1.23 Mbps
 - Upload: 0.6 Mbps

Broadband Research: 2020

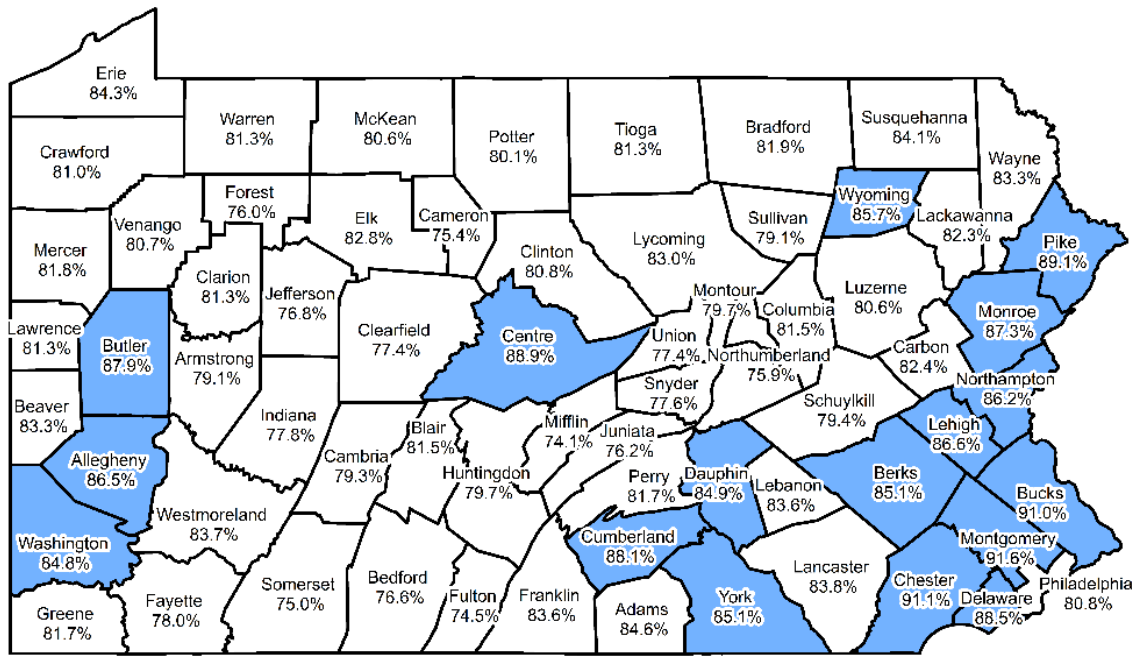
Rural vs. Urban Breakdown of Types of Connection Technology in Pennsylvania



Internet Access



Percent of Households with Internet Access, 2019



Statewide Percent of Households with Internet Access, 2019 = 84.7%

□ At or Below Statewide Rate ■ Above Statewide Rate

Data Snapshot of Rural Pennsylvania Households and Householders With and Without Internet Access, 2019	No Internet Access	With Internet Access
Avg. Age	68.0	52.8
Household Income	\$26,264	\$64,649
Poverty Rate	22%	10%
% With Children in Household	10%	29%
% Female	49%	48%
% Minority	4%	7%
% No High School Diploma	23%	5%
% with Disability	40%	17%
% Employed	27%	64%
% No Vehicle Available	24%	5%

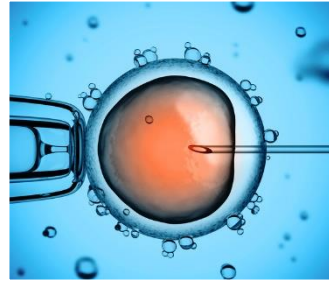
Data sources: Map = 2019, 5-Year Average and Table = 2019 Public Use Microdata Sample, American Community Survey, U.S. Census Bureau.



103 High Technology
Businesses, 2019¹



12% Adults are employed in
engineering, science and
computer occupations,
2019²



7% Adults have a college
STEM degree, 2019²



49 Businesses that employ
100 or more employees,
2020³



37 Public and private
elementary and secondary
school building with total of
14,300 student, 2020⁴



2 Degree granting colleges
with 2,700 students⁴



8 Health care facilities
(hospital, health clinic and
nursing homes)⁵



2 Public libraries with 54
public use computers, 2018⁶



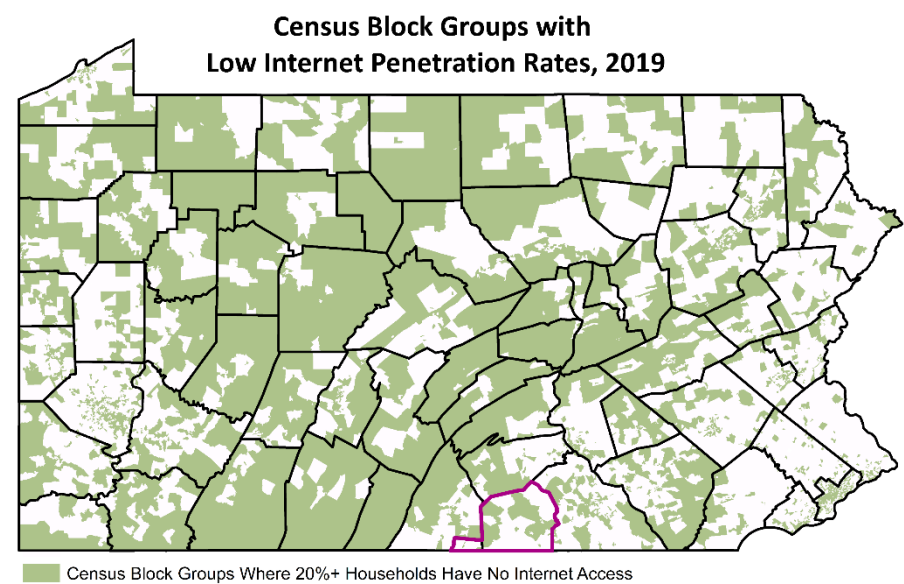
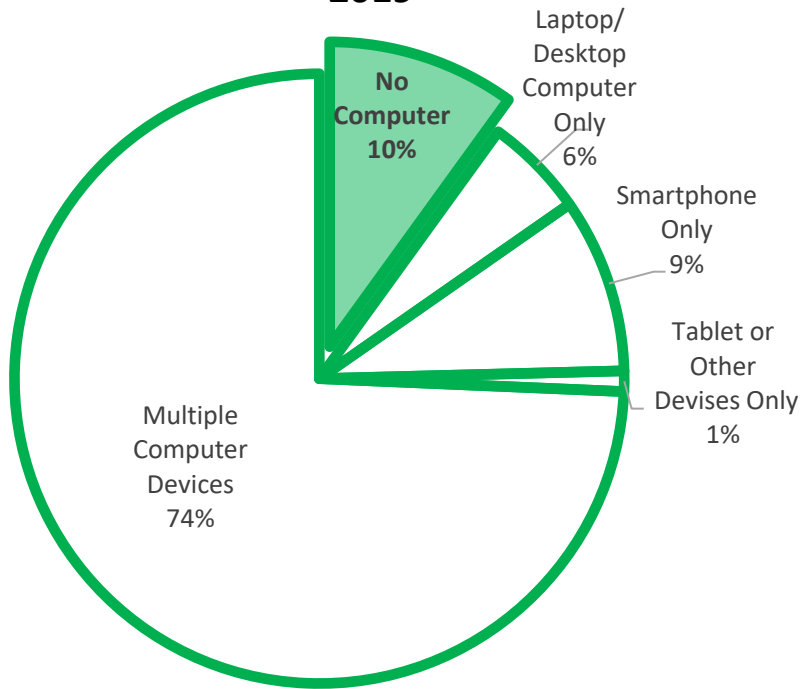
2,880 residents worked at
home, 2019²

Demand Indicators for Broadband in Greater Adams County

1. NAICS Codes for high technology businesses determined by National Science Foundation. Data includes only Adams County. Data source: U.S. Bureau of Labor Statistics.
2. Data include all of Adams County and Washington Township and Waynesboro Borough in Franklin County. Data source, 2019, 1-year average, American Community Survey, U.S. Census Bureau.
3. Data includes only Adams County. Data source: Pennsylvania Department of Labor and Industry.
4. Data includes only Adams County. Data source: Pennsylvania Department of Education.
5. Data includes only Adams County, Data source: Integrated Postsecondary Education Data System (IPEDS).
6. Data includes only Adams County. Health Resources and Services Administration (HRSA).
7. Data includes only Adams County. Data source: Institute of Museum and Library Services.

1-in-10 Households in Greater Adams County Do Not have a Computer Device

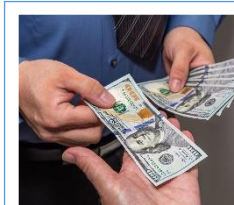
Types of Computer Devices Greater Adams County, 2019



Characteristics of Householders that Do Not Have a Computer in Greater Adams County, 2019



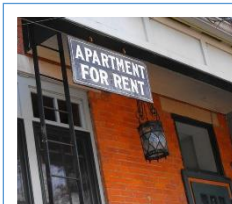
73.9 Avg. Age of Householder



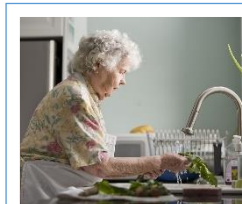
\$25,860 Median Household Income



3% Households have Children



36% Householders Rent their Home



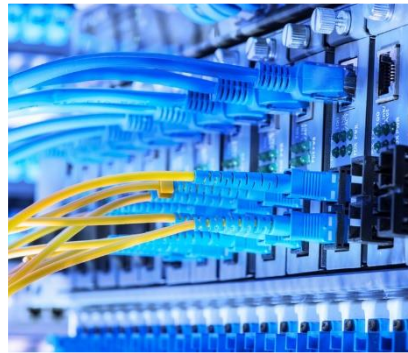
76% Householders Living Alone

How Households are Assessing the Internet in Greater Adams County, 2019



Cellular Data Plan

91% Greater Adams County
89% Pennsylvania
90% United State



Broadband (DSL, Cable, Fiber, etc.)

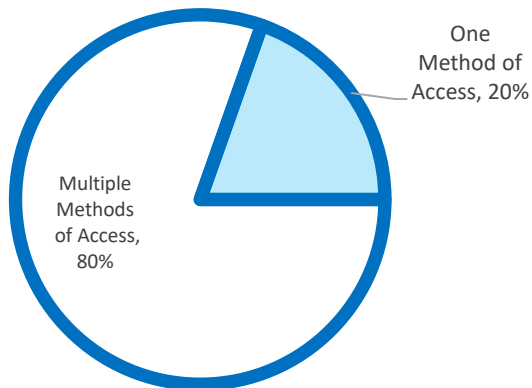
83% Greater Adams County
84% Pennsylvania
82% United State



Satellite

9% Greater Adams County
5% Pennsylvania
6% United State

80% of Greater Adams County Households Have More than One Method to Access the Internet Access, 2019



Free Wi-Fi

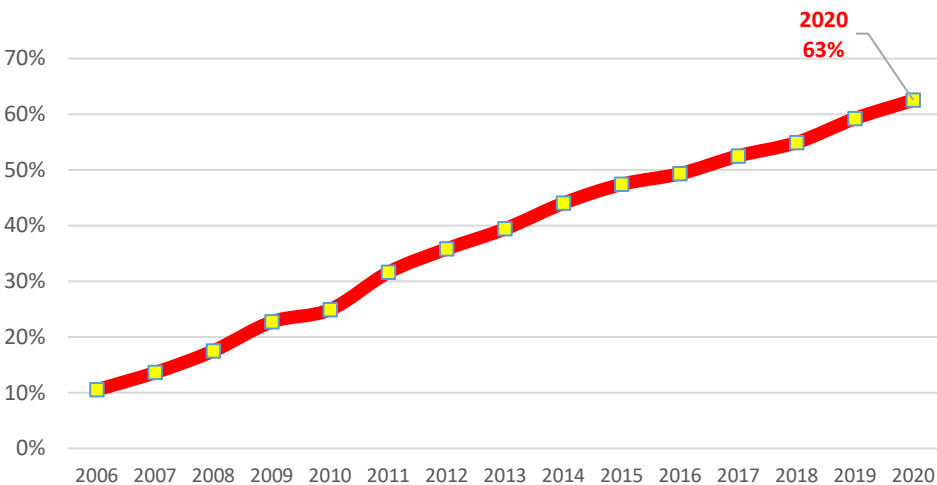
2% Greater Adams County
2% Pennsylvania
3% United States



Dial-Up

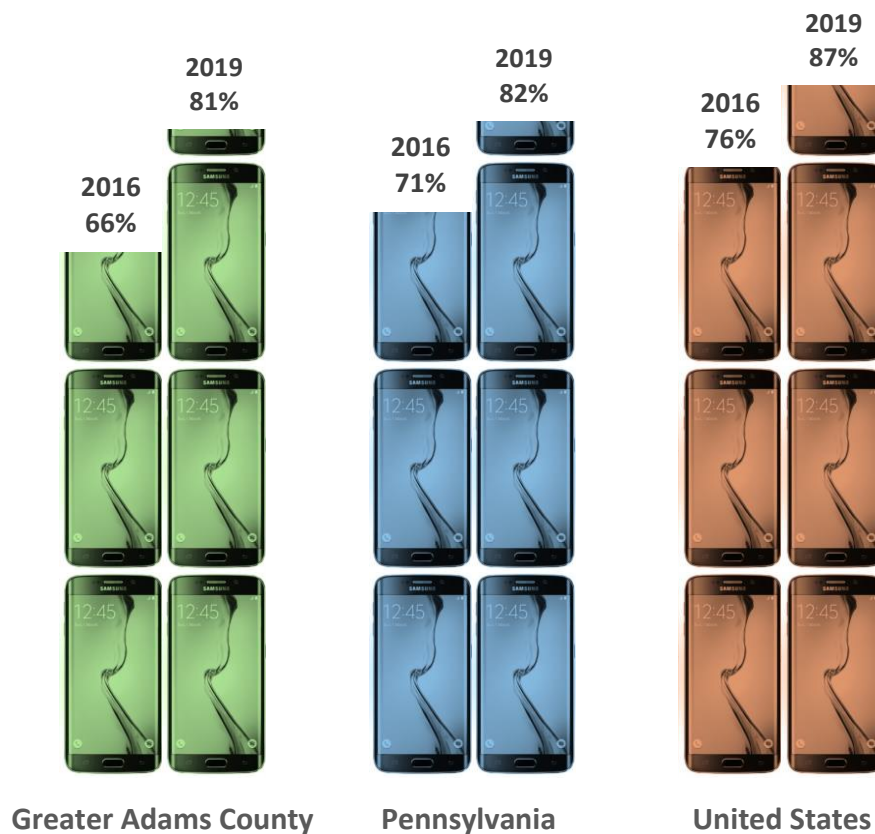
3% Greater Adams County
2% Pennsylvania
2% United States

Wireless only Households in the United States, 2006 to 2020¹ (January to June)



Households with Cellphones

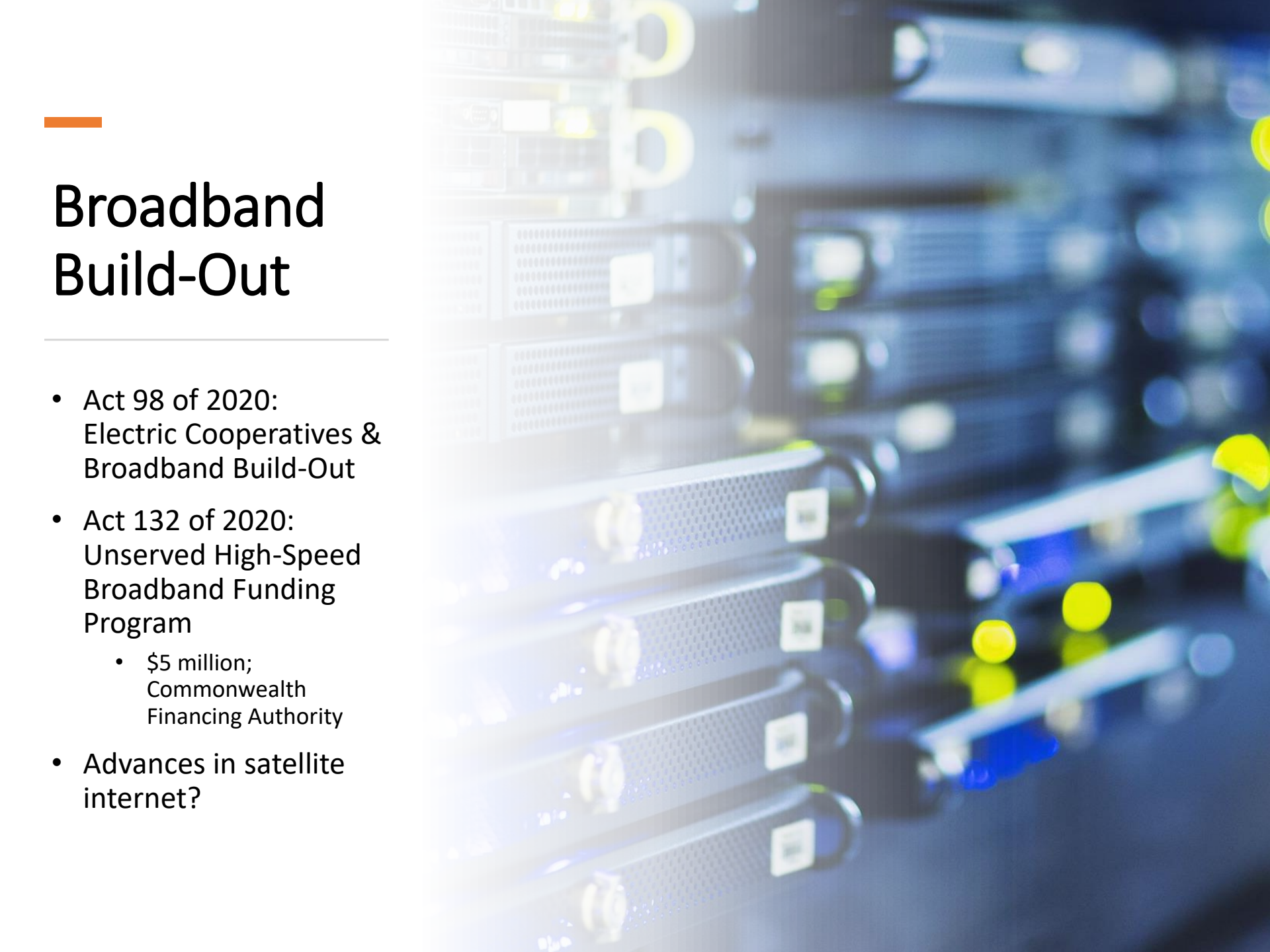
Percent of Households with Smartphones, 2016 and 2019²



Households in Greater Adams County with and without Smartphones 2019²

	No Smartphone in Household	Smartphone in Household
Avg. Age of Householder	71.8	51.7
Median Income	\$36,365	\$79,801
% Adults Employed	33%	70%
% No Home Internet Access	43%	2%
% Homeowners	76%	77%

1. National Health Interview Survey (NHIS), National Center for Rural Pennsylvania Health Statistics.
2. Data include all of Adams County and Washington Township and Waynesboro Borough in Franklin County. Data sources, 2016 and 2019, 1-year average, American Community Survey, U.S. Census Bureau.



Broadband Build-Out

- Act 98 of 2020:
Electric Cooperatives &
Broadband Build-Out
- Act 132 of 2020:
Unserved High-Speed
Broadband Funding
Program
 - \$5 million;
Commonwealth
Financing Authority
- Advances in satellite
internet?



Thank You

Questions & Comments
kkopko@rural.palegislature.us | www.rural.palegislature.us